

PIGEON FORGE
T.E.N.N.E.S.S.E.E

DEPARTMENT OF PUBLIC WORKS

MARK MILLER
DIRECTOR

NOTICE OF BID

The City of Pigeon Forge is receiving bids on traffic poles and mast arms.

Specifications may be obtained from the Public Works Department in City Hall between the hours of 8:00 am and 4:30 pm, Monday thru Friday.

All bids must be in sealed envelope with bidders name and address on outside and marked "Bid on Poles and Mast Arms."

Bids will be received until 2:30 pm, October 19, 2021, at which time they will be opened and read aloud.

The City reserves the right to reject any or all bids or to accept the bid most favorable to the city.

This 1st day of October, 2021.

Department of Public Works
Pigeon Forge, Tennessee

Specifications

All questions directed to Alan Childers, P.E. at Cannon & Cannon, Inc., (865) 770-4065, achilders@cannon-cannon.com.

All Signal poles and mast arms shall be black powder coated and those with arms 50' or greater in length shall include vibration damper plates. Anchor bolts shall be shipped with the pole/mast arm assemblies. These structures shall comply with TDOT Special Provision SP700SIG and Standard Drawing T-SG-9. Structure sizes are as follows:

Parkway @ Wears Valley

- Pole A – Height = 22 feet w/ 1 mast arms (length = 62 feet)
- Pole B – Height = 22 feet w/ 1 mast arm (length = 75 feet)
- Pole C – Height = 32 feet W/ 1 mast arm (length = 85 feet) and 1 luminaire arm (length = 20 feet and arm to run parallel with mast arm at top of pole)

Parkway @ Jake Thomas Boulevard

- Pole A – Height = 22 feet w/ 2 mast arms (length = 48 feet @ 12 O'clock and 68 feet @ 3 O'clock)
- Pole B – Height = 32 feet w/ 1 mast arm (length = 35 feet and 1 luminaire arm (length = 20 feet and run 22 ½ degrees left of mast arm at top of pole)
- Pole C – Height = 22 feet w/ 1 mast arm (length 48 feet)

Shipping and Delivery of Bid and Items

Shipment delivery: Pigeon Forge Street Department
2320 Garland Harmon Drive
Pigeon Forge, TN 37863

Mail or deliver bid: Pigeon Forge Public Works
PO Box 1350
3211 Rena Street
Pigeon Forge, TN 37868

Parkway & Wears Valley

| <u>Item</u> | <u>Price</u> |
|---------------|-----------------|
| Pole A | _____ |
| Arm A | _____ |
| Pole B | _____ |
| Arm B | _____ |
| Pole C | _____ |
| Arm C | _____ |
| Luminaire Arm | _____ |
| | Sub-Total _____ |

Parkway & Jake Thomas Road

| <u>Item</u> | <u>Price</u> |
|---------------|-----------------|
| Pole A | _____ |
| Arm A | _____ |
| Pole B | _____ |
| Arm B | _____ |
| Luminaire Arm | _____ |
| Pole C | _____ |
| Arm C | _____ |
| | Sub-Total _____ |

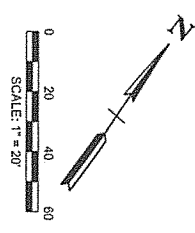
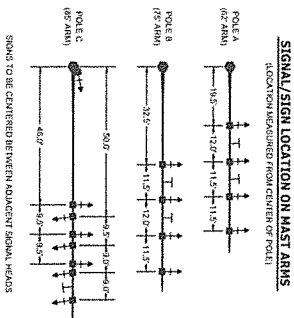
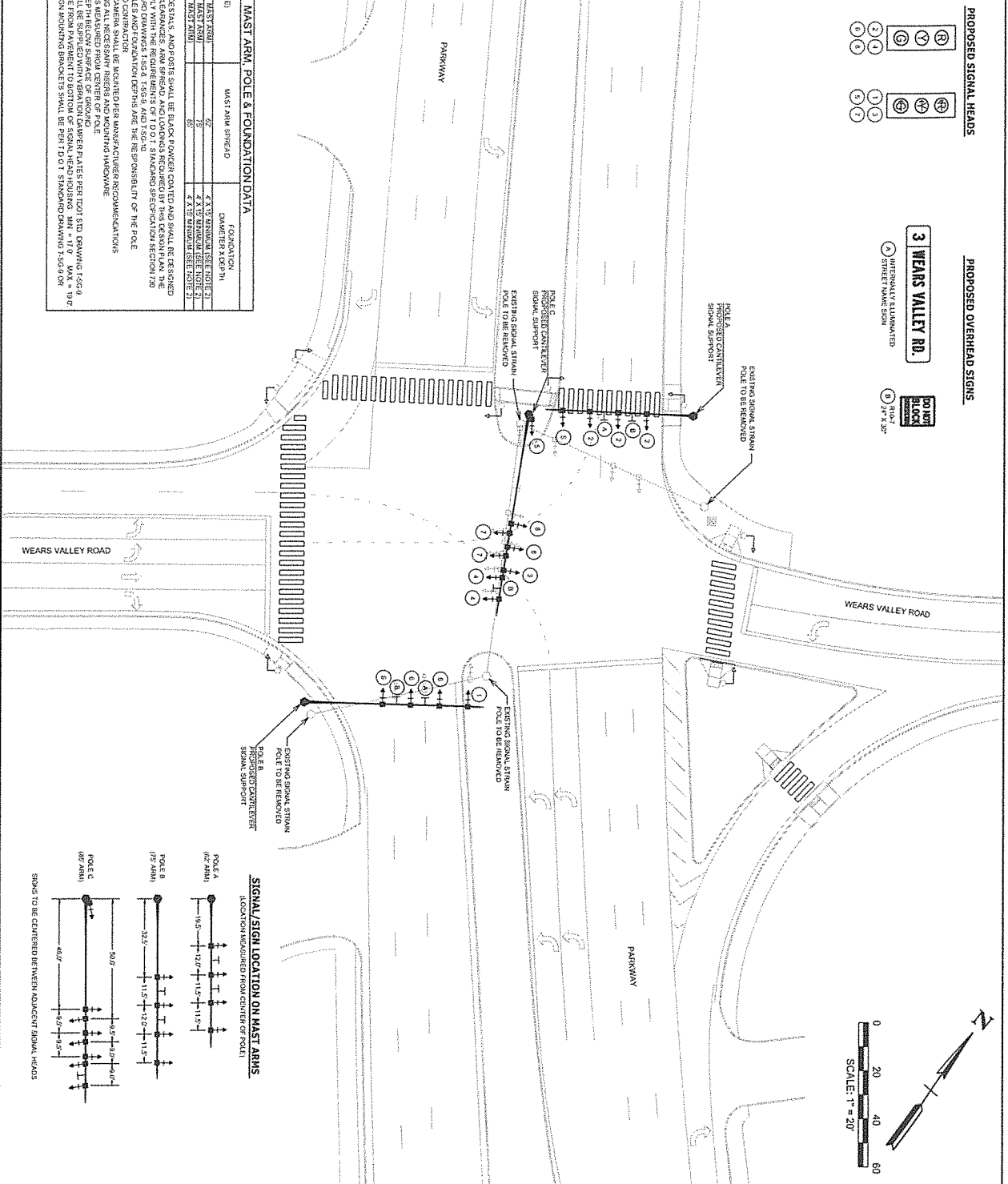
TOTAL BID: _____

Delivery Time: _____

| MAST ARM, POLE & FOUNDATION DATA | | |
|----------------------------------|-----------------|--------------------------------|
| POLE TYPE | MAST ARM SPREAD | FOUNDATION DIAMETER X DEPTH |
| A. POLE WITH MAST ARM | 75' | 4 X 3 MINIMUM (SEE NOTE 2) |
| B. POLE WITH MAST ARM | 75' | 4 X 3 MINIMUM (SEE NOTE 2) |
| C. POLE WITH MAST ARM | 85' | 4 X 3 MINIMUM (SEE NOTE 2) |

NOTES:

1. ALL MAST ARMS, PEDESTALS, AND POLES SHALL BE BLACK POWDER COATED AND SHALL BE DESIGNED PER THE VERTICAL CLEARANCES AND SPREAD AND LOADS REQUIRED BY THIS DESIGN PLAN. THE AND TO IT. STANDARD DRAWING 1502, 1503 AND 1504.
2. FINAL DESIGN OF POLES AND FOUNDATION DEPTHS ARE THE RESPONSIBILITY OF THE POLE MANUFACTURER.
3. A RECORD SET OF ALL DRAWINGS SHALL BE MAINTAINED PER MANUFACTURER RECOMMENDATIONS ON POLE C, INCLUDING ALL NECESSARY RISERS AND MOUNTING HARDWARE.
4. MAST ARM SPREADS MEASURED FROM CENTER OF POLE.
5. ALL MAST ARMS SHALL BE SUPPORTED WITH VIBRATION DAMPER PLATES PER TOST STD. DRAWING 1-50-6.
6. ALL MAST ARMS SHALL BE SUPPORTED WITH VIBRATION DAMPER PLATES PER TOST STD. DRAWING 1-50-6.
7. VERTICAL CLEARANCE FROM PAVEMENT TO BOTTOM OF SIGNAL HEAD HOUSING: MIN. = 11' 0" MAX. = 19' 6" EQUAL LEFT.
8. FOUNDATION.

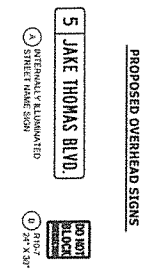
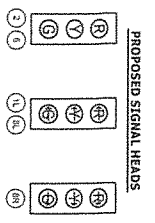


- EXISTING LEGEND**
- ▣ PAD MOUNTED CONTROLLER CABINET
 - SIGNAL STRAIN POLE
 - VEHICLE SIGNAL HEAD
 - PEDESTRIAN SIGNAL HEAD
 - SIGNAL STRAIN WIRE
- PROPOSED LEGEND**
- SIGNAL STRAIN POLE
 - SIGNAL MAST ARM
 - VEHICLE SIGNAL HEAD WITH ASSOCIATED PHASE
 - SIGNAL HEAD BOX (TYPE B)
 - SIGNAL CONDUIT (PVC)
 - OVERHEAD SIGN

PLAN SHEET PURPOSE

THE PURPOSE OF THIS PLAN SHEET IS TO INDICATE THE LOCATION OF THE SIGNAL HEADS, SIGNAL STRAIN POLES, AND SIGNAL SUPPORTS. IT IS NOT TO BE USED FOR CONSTRUCTION.

| | |
|---|---|
| | CANNON & CANNON INC CONSULTING ENGINEERS - FIELD SUPERVISORS 10 885.670.0855 3500 Kingston Hwy Knoxville, TN 37919 www.cannon-cannon.com |
| | CITY OF PIGEON FORGE |
| PIGEON FORGE PARKWAY TRAFFIC SIGNALS | TRAFFIC SIGNAL POLE DESIGN PARKWAY AT WEARS VALLEY ROAD |
| PROJECT NO: 2024-0019 DATE: 04/22/24 DRAWN: [Name] CHECKED: [Name] | 1 |

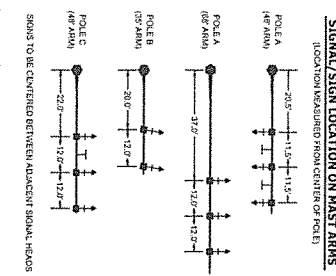
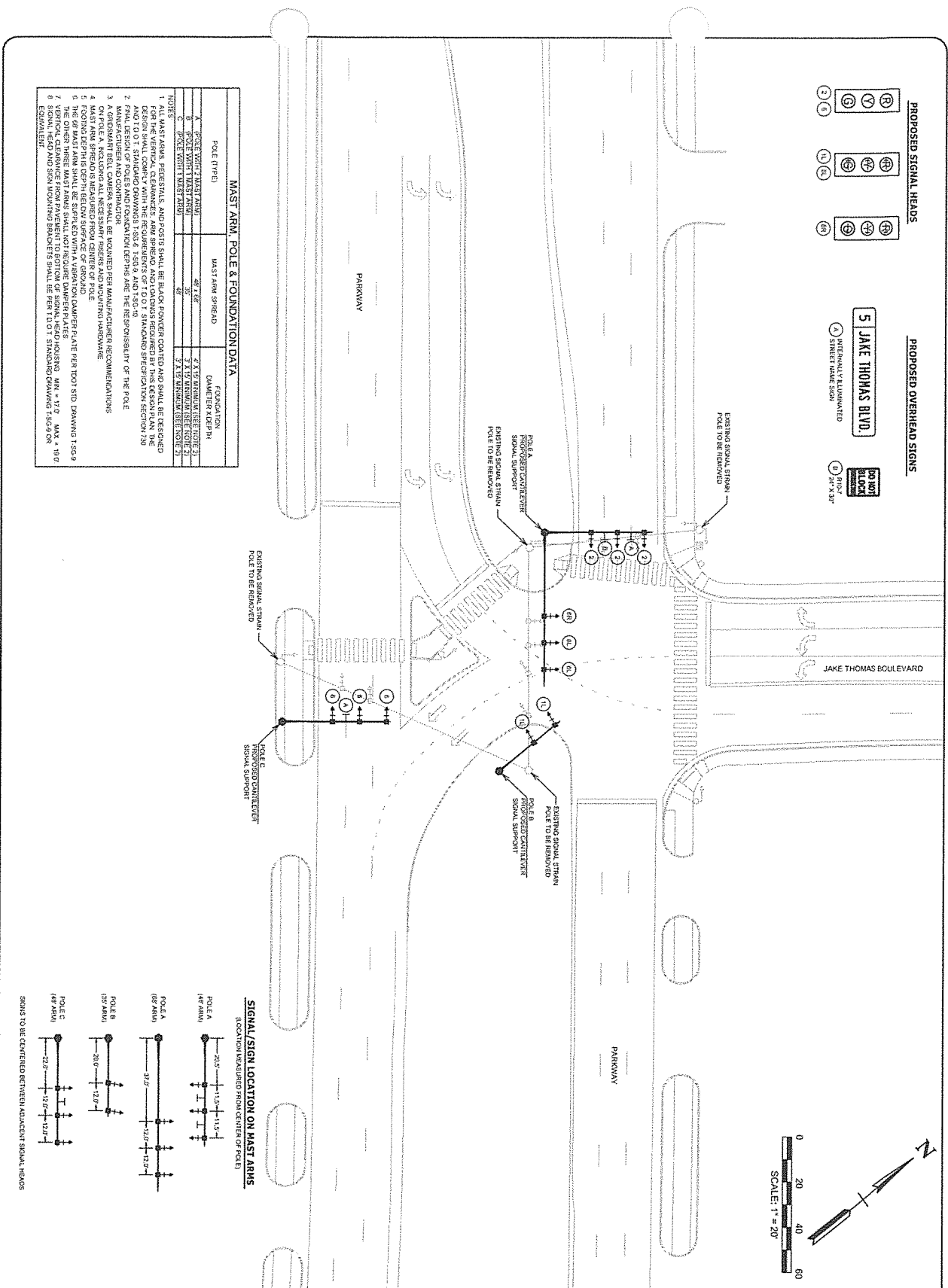


MAST ARM, POLE & FOUNDATION DATA

| POLE TYPE | MAST ARM SPREAD | FOUNDATION |
|-----------|-----------------|----------------------------|
| A | 48' 7.6" | 3 X 15 REINFORCED CONCRETE |
| B | 35' | 3 X 15 REINFORCED CONCRETE |
| C | 48' | 3 X 15 REINFORCED CONCRETE |

NOTES:

1. ALL MAST ARMS, PEDESTALS, AND POLES SHALL BE BLACK POWDER COATED AND SHALL BE DESIGNED FOR THE VERTICAL CLEARANCE AND SPREAD AND LOADS REQUIRED BY THIS DESIGN PLAN. THE FINAL DESIGN OF POLES AND FOUNDATION DEPTHS ARE THE RESPONSIBILITY OF THE POLE MANUFACTURER.
2. A SIGNMOUNT BELL CARRIER SHALL BE MOUNTED PER MANUFACTURER RECOMMENDATIONS.
3. ON POLE A, INCLUDING ALL NECESSARY BRACES AND MOUNTING HARDWARE.
4. MAST ARM SPREADS MEASURED FROM CENTER OF POLE.
5. THE OTHER THREE MAST ARMS SHALL NOT REQUIRE DAMPER PLATES.
6. SIGNAL HEADS SHALL BE SUPPLIED WITH A VIBRATION DAMPER PLATE PER DOT STD. DRAWING T-509.
7. SIGNAL HEADS SHALL BE SUPPLIED WITH A VIBRATION DAMPER PLATE PER DOT STD. DRAWING T-509.
8. SIGNAL HEADS SHALL BE SUPPLIED WITH A VIBRATION DAMPER PLATE PER DOT STD. DRAWING T-509.



DECISIONS

DATE

CLIENT

CITY OF PIGEON FORGE

PROJECT

PIGEON FORGE PARKWAY TRAFFIC SIGNALS

TRAFFIC SIGNAL POLE DESIGN

JAKE THOMAS BOULEVARD

DATE

SCALE

2

EXISTING LEGEND

- PAID MOUNTED CONTROLLER CABINET
- SIGNAL STRAIN POLE
- VEHICLE SIGNAL HEAD
- PEDESTRIAN SIGNAL HEAD
- SIGNAL SPANWIRE

PROPOSED LEGEND

- SIGNAL MAST ARM
- SIGNAL STRAIN POLE
- VEHICLE SIGNAL HEAD w/ ASSOCIATED PHASE
- SIGNAL FULL BOX (TYPE B)
- SIGNAL COUPLER (P/O)
- OVERHEAD SIGN

PLAN SHEET PURPOSE

THE PURPOSE OF THIS PLAN SHEET IS TO PROVIDE FOR THE ORDERING OF THE MATERIALS AND EQUIPMENT FOR THE PROJECT. IT IS NOT TO BE USED FOR CONSTRUCTION.

CANNON & CANNON, INC.

10.855.810855

4500 Spring Hill

Kennett, TN 37203

www.cannon-cannon.com

BID SHEET

Bidder: _____

Address: _____

Contact: _____ Phone: _____

FAX: _____ Email: _____

Signature

Date